

IN FOCUS

MARTIN LUTHER COLLEGE

Dear colleagues in faith and in witness to the ascended Lord Christ!

Jesus turns meetings from the mundane to the magnificent. Our Savior promised, *where two or three come together in my name, there am I in the midst of them.* That changes your perspective for your convention. How exciting these next days are! Jesus is with you, and you may be confident that, because of his grace, he will bless your discussions and your fellowship, to his glory and for the good of his kingdom. *In all things God works for the good of those who love him, who have been called according to his purpose.*

Please accept this report from the WELS College of Ministry as an effort to communicate our partnership with you in the Great Commission and to demonstrate our accountability to this church body that so generously supports MLC in prayers and offerings. Rejoice with us as you read the many things a gracious Lord God accomplishes for his church at MLC in spite of the frailties and foibles of weak humans. And continue to pray for us. Pray that the Spirit keep us all faithful to the inerrant Word of the living God. Pray that Jesus raise up more and more servants of this powerful Word who will go and reach souls with the *peace that passes all understanding.*

May Jesus, our great Good Shepherd, guide your convention and provide all you need for the gospel efforts in your district.



In Christ,
Rev. Mark Zarling
President, Martin Luther College

**Focus on
Pacific Northwest District
Page 8**

FOCUS on FACULTY

Retiring summer 2016



Prof. Lyle Lange
WLS '69
Professor of theology and
history/social science
DMLC 1978-1995;
MLC 1995-2016



Dr. Wayne Wagner
DMLC '72
Professor of music
DMLC 1979-1995;
MLC 1995-2016

Celebrating ministry anniversaries

- Professor **Paul Tess** DMLC '77: 40 years
- Professor **Keith Wessel** WLS '91: 25 years
- Dr. **Jeffery Wiechman** DMLC '90: 25 years

Newly called for 2016-17

- **Craig Hirschmann** DMLC '84
(professor of music)
- **Greg Holzhueter** MLC '11
(professor of math & PE, basketball coach)
- **David Scharf** WLS '05
(professor of theology)
- **Not Yet Filled**
(director of Early Childhood Learning Center)

The Workers Are Few

Our Lord Jesus' words in Luke 10:2 ring especially true today: "The harvest is plentiful, but the workers are few. Ask the Lord of the harvest, therefore, to send out workers into his harvest field."

Although enrollment at the WELS College of Ministry is stable, and rising applications seem to signal larger classes in the future, the need for pastors and teachers is still very great.

As of this writing, Call Day 2016 has not yet occurred, but in 2014 and 2015, 85 teacher requests went unfilled and 35 pastor requests went unfilled.

"There is a critical need for both pastors and teachers," President **Mark Zarlring** WLS '80 says. "Right now we have 94 parish vacancies. As pastors of the Boomer Generation retire, we will not have enough young men trained to take their places. During the 1975-85 decade, 550-600 candidates graduated from WLS; 40 years later, in 2005-15, only 367 have graduated from the MLC preseminary track, having four more years of training ahead of them.

"The need for teachers is also critical. We have 130 vacancies right now, and expansions are being planned that will require even more."

For example, Principal **Ben Troge** MLC '02 at Divine Savior-Doral FL writes: "The Lord has presented us with growing opportunities for Christian education in Florida. And we rely on MLC-trained teachers to seize these opportunities. In the next year Divine Savior will need an additional 6-9 teachers. In the next four years, we'll need 40-60 additional teachers. If God continues to bless our future outreach and expansion efforts as he has in the past, those 40-60 new teaching positions may very well increase significantly."

President Zarlring urges: "Encourage your young people to consider serving their Lord in the public ministry of the gospel. Support current MLC and WLS students with a note or a gift. And continue to pray to our Lord, who gifts us with pastors, teachers, and staff ministers."

Ten Years of Thalassa

2016 marked the tenth anniversary of the MLC Thalassa Prize, a contest that awards \$1,000 to the best photo-and-essay submission from an MLC student or graduate who has served in an international ministry. The winner keeps half of the prize and designates the other half to an international mission of their choice.

The prize was funded by anonymous donors for the first eight years and by the MLC International Services Office in 2015 and 2016. In honor of the tenth anniversary, the prize was doubled to \$2,000.

Johannah Crass MLC '14 won the 2016 prize with her entry, "White Robes." Johannah, who has served a year in Russia and a year in Antigua, designated \$1000 of her prize to the WELS mission in Russia.

Winning photos and essays may be found at mlc-wels.edu/thalassa/past-winners

Strategic Planning

Looking Back

In 2011 MLC embarked upon the strategic plan "Compelled to Speak." Under God and by his grace, we fulfilled many initiatives:

- Built Early Childhood Learning Center.
- Established second master's degree (educational administration).
- Established undergraduate special education major, Chinese language minor, and urban educational ministry minor.
- Expanded continuing education courses and enrollment.
- Developed plan for campus maintenance, renovation, expansion.
- Increased number of private scholarships.
- Hired financial literacy coordinator.
- Began intergenerational ministry at Highland Regency House.
- Established International Services Office.
- Expanded recruitment of minority, international, home school, and public school students.

We continue to work toward these goals:

- Increase faculty PhDs to 40%.
- Enroll 800 undergraduate students.

Looking Ahead

Now we ask for our Lord's guidance again as we begin work on a new strategic plan for 2017-2023. Synthesizing input from different agencies, data from various assessment tools, and the objectives outlined in our Master Site Plan and Master Staffing Plan, we will begin to formulate a vision for the next six years.

Thank you for your prayers and your support as we continue to prepare gospel heralds who are fully prepared to meet WELS ministry needs.



New Master's Degree: Educational Administration

Enrollment is rising in both tracks of the new master's degree in educational administration.

Principals and early childhood center directors have similar job descriptions and so can attend many of the same courses, such as "Leadership for Change."

But they also face unique challenges and opportunities, and different courses have been developed to address those distinctions.

MS-EDUCATIONAL ADMINISTRATION COURSES

Principal Emphasis	ECE Director Emphasis
Educational Leadership	
Supervision of Instruction	
Leading the School Community	
Leadership for Change	
School Business Administration	
Foundations of Educational Research	
The Principalship	The Director as Leader
Curriculum Design and Implementation	Early Childhood Curriculum
Instruction and Assessment Electives	Development of Young Children
School Law	Legal & Ethical Issues in Early Childhood

The vision is that every WELS principal and ECE director be fully trained prior to receiving a school leadership call. This new master's degree is helping fulfill that vision.

New Financial Literacy Program



The new position of financial literacy coordinator was created at MLC in 2015 in response to the WELS Conference of Presidents' concerns about graduates' debt.

JoElyn Krohn fills the position. Primarily, she meets with students at pivotal times in their college careers—their first year and their graduation year—to discuss their financial situation and help them understand the best ways to keep their college loan debt low and pay it off quickly.

She also teaches students through an online curriculum called CashCourse. Krohn's smart use of that program earned MLC national recognition and a special grant.

"Our goal is to help students make smart decisions in college and to transition to life after college with as little stress and as few financial constraints as possible," Mrs. Krohn says. "This will not only help the individual students, but we pray it will also have a positive impact on our congregations, schools, and synod."

MarketWatch notes that nearly 70% of American graduates had student loan debt in 2015, the average being \$35,051. For those 2015 MLC graduates with debt, the average was \$25,519.

MLC and WLS: Training New Pastors Together

Faculties from Wisconsin Lutheran Seminary (WLS) and MLC met in La Crosse, Wisconsin, in February to review the coordination of MLC's preseminary program with the seminary program. Topics included Spanish study, writing skills, financial literacy, and student health issues.

In 2015-2016 MLC preseminary juniors and seniors visited WLS, and many WLS students came back to MLC throughout the year to encourage their brothers on the path to the pulpit.



Tour Our New Website!

A college's website is usually the first point of contact for potential students, parents, and other friends of the institution—and first impressions count. That's why so much research and development went into MLC's new website. It's mobile-friendly, smart looking, and easy to navigate. Take a look! mlc-wels.edu/website-tour



FIRST-YEAR STUDENT PROFILE

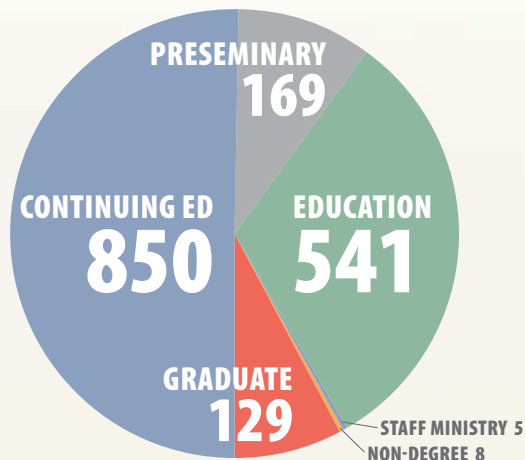
3.46 Average HS GPA
24.3 Average ACT

GRADUATES

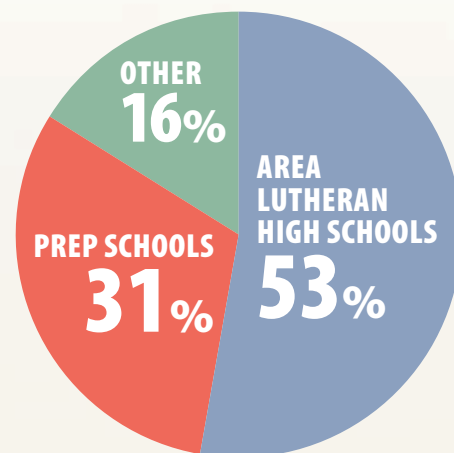
DEC 2015 22 Education

MAY 2016 40 Preseminary
 92 Education

ENROLLMENT: 1702



UNDERGRAD STUDENTS BY HIGH SCHOOL



RESIDENTIAL LIFE

99% LIVE ON CAMPUS



ATHLETICS

1/3 Play NCAA D3 athletics

1/2 Play intramurals

84 First-semester Academic All-Conference Awards (GPA 3.5-4.0)

MUSIC

1/2 Students take piano or organ lessons



1/10 Play in wind symphony

1/3 Sing in a choir

1/10 Participate in fall musical

RECRUITMENT VISITS

ON CAMPUS

- 770** HS students attended Focus on Ministry weekends on campus
- 46** Individual HS students visited campus
- 262** Elementary school students visited campus

OFF CAMPUS

9,000+ HS student visits conducted by MLC admissions counselors

DAYLIGHT USA MINISTRY ASSISTANCE

- 35** Students participated (decrease from previous years)
- 23** Congregations received assistance
- 15** Different states served, from New York to California, from Alaska to Florida



60% MLC students participated in Daylight USA before they graduated in the last decade

CONTINUING ED

850 students (mostly called workers) served **231** courses (on campus, online, and on location)

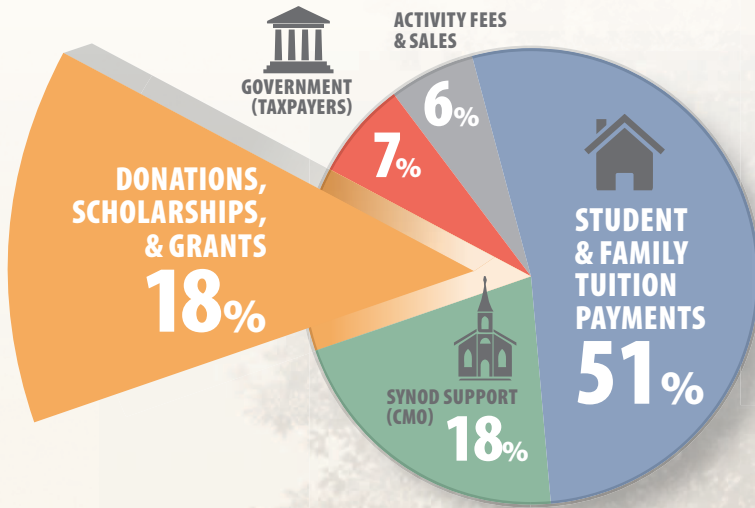
GRADUATE STUDIES

- 11** Years in existence
- 2** Degrees
- 92** Master's degrees granted
- 21** Degrees granted 2015-2016
- 129** Graduate students
- 53** Graduate courses
- 31** Graduate professors



NOON, & KNIGHT

BUDGET FUNDING



TUITION, ROOM & BOARD

2015	Tuition	\$13,570
2016	Room & Board	\$5,350
	Total	\$18,920

2016	Tuition	\$13,980
2017	Room & Board	\$5,510
	Total	\$19,490



Tuition increase 3%
Financial aid increase 5%

FINANCIAL AID

\$2.2 Million institutional aid given

- 370 need-based grants (average \$3,140)
- 545 merit-based scholarships (average \$1,680)
- 146 distance grants (average \$670)

\$950,000 private grants and scholarships given

- \$100,000 from **privately funded competitive scholarships**
- \$550,000 from **congregations, districts, and high schools**
- \$220,000 from **other service organizations** such as MLC Ladies' Auxiliary, OWLS, Antioch Foundation
- \$80,000 from **Salem Lutheran Foundation**

96% students receive scholarships, grants, loans, and/or work-study funds.

CAMPUS SPIRITUAL LIFE

10 chapel services per week in Chapel of the Christ PLUS



- Special worship & communion services
- Theology courses, required & elective
- Bible studies, formal & informal
- All courses centered on Christ & keyed to ministry



MLC RANKED NATIONALLY FOR QUALITY & AFFORDABILITY

Thanks to your special gifts and congregational offerings, MLC is able to keep the cost of education low—so low, in fact, that we've received national attention.

Washington Monthly

Ranked in top 10 in the nation in *Washington Monthly's* Best-Bang-for-Your-Buck Baccalaureate Colleges.

MONEY

Ranked #52 (top 4%) in *MONEY* magazine's "Best Colleges" in the nation based on quality, affordability, and alumni earnings.

USA Today

Ranked #4 in nation by College Factual, as reported in *USA Today* article, "Best 10 Colleges for the Money."

GoGrad

Master of Science in Education online program ranked #18 in nation by *GoGrad*.

Top Education Degrees

Ranked 9th in nation by *Top Education Degrees'* listing, "50 Most Affordable Small Colleges for a Master's in Education 2016."

Support Your Congregation's MLC Students!

New Congregational Partner Grant Program

Through the MLC Congregational Partner Grant Program, congregations can encourage and support their members who want to prepare for the public ministry at Martin Luther College.

The congregation awards a grant to students newly admitted to MLC, and MLC matches that grant up to \$1,000 per student.

For more information and the application form, go to mlc-wels.edu and type "CPGP" in the search box.

Develop Congregational Leaders Through CAP

The WELS Congregational Assistant Program (CAP) assists pastors and staff ministers in training qualified leaders in their congregations.

CAP offers a range of biblical and practical courses to all WELS members, men and women, to help them grow in the grace and knowledge of our Lord and Savior Jesus Christ. Many CAP students are already serving, which means they are applying what they learn immediately in their local settings.

CAP by the Numbers

64 Students

45 Congregations

18 States

90 Leaders who have completed the program

CONGREGATIONAL ASSISTANT PROGRAM

More information: welscap.org

Questions: welscap@mlc-wels.edu

Sports Performance Training 5-Day Workshop

June 20-24, 2016 8 am – 4 pm



REGISTER NOW at mlc-wels.edu/go/spt



WELS National Physical Education Conference

September 22-23, 2016
La Crosse WI Convention Center

mlc-wels.edu/go/peconf



MLC Professional Development Series

Ready-to-go spiritual and professional faculty inservices

Each *Professional Development Series* inservice contains a year's worth of modules that you custom fit to your schedule. Faculties receive access to all video and print resources online.

NEW **Six Highly Effective Teaching Strategies** (6 modules)
Increasing student achievement is possible! Each module presents a research-proven strategy and follow-up activities to implement it.

Getting to Know the WELS Teaching Standards (11 modules)
This series helps WELS teachers and principals understand each WELS teaching standard and its intended use.

The Foolishness of God: A Biblical Perspective on Science (6 modules)
Guided discussion provides Bible-based guidance on ethical issues that teachers can pass on to their students.



Choose one of these inservice series for your 2016-2017 school year! Register NOW!
mlc-wels.edu/continuing-education

Hebrew Courses at Martin Luther College Summer 2016

HEB9001 Hebrew Institute

An upper-level course in biblical Hebrew for parish pastors with a strong interest and ability in Hebrew and for those currently teaching Hebrew in the fellowship of WELS.

Dates: July 11-15, 2016

Instructor: Prof. Thomas Nass

HEB9002 Hebrew Review

Review of Hebrew grammar, verb analyzation, and vocabulary. Translation of two to three chapters of historical prose.

Dates: July 11-15, 2016

Instructor: Prof. Mark Paustian

Tuition for Either Course:

\$305, includes fees

Room and Linens for the Week: \$65

Lunch Plan: \$25

14-Meal Plan: \$60

mlc-wels.edu/continuing-education

InFocus Staff

WRITER/EDITOR

Laurie Gauger DMLC '87

STUDENT ASSISTANT

Kylah Schroeder MLC '18

STUDENT PHOTOGRAPHERS

Jonathan Witte MLC '18

Shelby Pitt MLC '19

Adam Marley MLC '17

GRAPHIC DESIGNER

Lime Valley Advertising, Inc.

Office of Mission Advancement

VICE PRESIDENT

Michael Otterstatter WLS '94

PUBLIC RELATIONS DIRECTOR

William Pekrul DMLC '80

ALUMNI DIRECTOR

Steve Balza DMLC '93

College Administration

PRESIDENT

Mark Zarling WLS '80

VP for ADMINISTRATION

Steven Thiesfeldt DMLC '74

VP for ACADEMICS

Jeffery Wiechman DMLC '90

VP for STUDENT LIFE

Jeffrey Schone WLS '87

VP for MISSION ADVANCEMENT

Michael Otterstatter WLS '94

Governing Board

Chairman Michael Woldt WLS '81

Vice Chairman Jonathan Kolander WLS '91

Secretary Steven Rosenbaum DMLC '86

Joe Archer DMLC '77

Dale Krause

Timothy Petermann

Barry Price

Duane Schmeichel WLS '91

Michael Seifert WLS '03

David Uhlhorn MLC '99

Michael Valleau

Steven Vasold MLC '02

Mark Wessel WLS '86

ADVISORY:

Charles Degner WLS '79

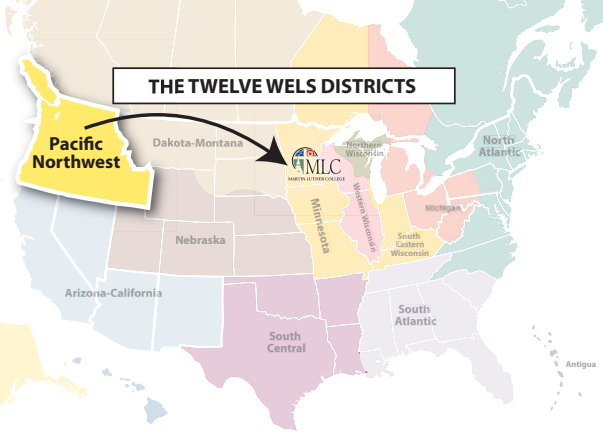
Randy Matter

Paul Prange WLS '88

Mark Schroeder WLS '81

Mark Zarling WLS '80

MLC InFocus is published by Martin Luther College Mission Advancement Office and is distributed free of charge to students, faculty, staff, alumni, parents, and friends. Owned and operated by the Wisconsin Evangelical Lutheran Synod (WELS), Martin Luther College exists to serve the ministerial needs of the WELS. Comments are welcomed and should be directed to gaugerlf@mlc-wels.edu or Laurie Gauger, MLC InFocus, 1995 Luther Court, New Ulm MN 56073.



Graduates December 2015



**Caleb
Birsching**

St. Paul-Tacoma WA

Major: Educational Studies



**Tarah
Steinbrenner**

Cross of Christ-Boise ID

Major: Early Childhood Education



**Taylor
Swanson**

Beautiful Savior-Hillsboro OR

Major: Elementary Ed



**Meet Senior
Josh Severeid**

Holy Trinity-Des Moines WA

Majors: Instrumental Music / Vocal Music

“I’m a completely different person now than when I first got here. I’ve become more outgoing and confident, and I’ve learned a lot. I love using my talents to perform music and glorify God. As I look ahead, I’d love to be directing a choir or band and writing my own original compositions for use in and out of worship.”



**Meet Senior
Ruth Nitz**

Messiah-Olympia WA

Majors: Spanish / Communication Arts & Lit

“I looked into many schools with stand-out education programs, and MLC had the highest quality program with the lowest cost. I knew I could also learn more about the Bible here. And my best friend, Taylor Swanson, had come here, and she had nothing but praise for it. I came to MLC very cautiously, but I was pleasantly surprised by what I learned and how I was given many opportunities to develop my talents.”

PACIFIC NORTHWEST DISTRICT & MLC in 2015-2016

- Enrollment: 10
- Graduating Seniors: 3
- Visitors to Campus:
33 high school students
- Your Admissions Counselor:
David Roekle MLC '15 visited
Evergreen LHS to speak to students
face to face.



Pacific Northwest District & MLC Daylight USA 2016

Four MLC students will lend ministry assistance to Peace-Eagle River, Alaska, May 26-August 11: **Chris Pflughoeft** (Bethlehem-Menomonee Falls WI), **Michaela-Marie Miller** (Peace-Eagle River AK), **Jacob Wine** (St. John-Saginaw MI), and **Samantha Koepsell** (Bethany-Appleton WI).